

**FCW**  
FASHION  
CLUBWEAR



**JACKETS**  
**VESTS**  
**FLEECE**  
**PANTS**  
**SCARVES**

NEW



WIND & COLD  
PROOF



INSULATIVE



EASY CARE



ULTRA LIGHT



RECYCLED  
PET



JK60



## JK59/JK60

### MENS & LADIES SUSTAINABLE INSULATED PUFFER JACKET (3D CUT)

#### FABRIC/ STYLE

Shell: 400D Certified Recycled PET - 56gsm

Insulation: 100% Certified Recycled PET - 100gsm

Lining: 230T Polyester Taffeta

- 70% of this jacket is made of certified recycled Polyester.
- Elasticated cuffs keep out wind & coldness
- Unique panel cushioned collar provides extra warmth around the neck
- Zip closure with chin protection to keep wind out and Warmth in
- Deep vertical Side Pockets with Zip closure
- Internal utility large mesh pockets
- Ultralight weight with 3D Cut design
- Wrinkle free and Modern fit
- Internal embroidery zip opening

#### JK59 - MENS SUSTAINABLE INSULATED PUFFER JACKET (3D CUT)

MODERN FIT	XS	S	M	L	XL	2XL	3XL	5XL	7XL
HALF CHEST	54	56.5	59	62	65	68	71	77	83
BODY LENGTH	70/73	72/75	74/77	76/79	78/81	79/82	80/83	81/84	82/85

#### JK60 - LADIES SUSTAINABLE INSULATED PUFFER JACKET (3D CUT)

MODERN FIT	6	8	10	12	14	16	18	20	22	24
HALF CHEST	46	48.5	51	54	57	60	63	66	69	72
BODY LENGTH	63	64	65	66	67	68	69	70	71	72



BLACK



NAVY





## JK58

### UNISEX SUSTAINABLE SEAMLESS PARKA JACKET (3D CUT)

#### FABRIC

Shell: 100% Polyester matt pongee with PU coating - 75gsm

Insulation: 100% Certified Recycled PET - 180gsm

Lining: 230T Polyester Taffeta.

#### STYLE

- Matte fabric with durable water-repellent coating
- Sewn in wrist ribbing cuffs – keeps out wind & rain
- Cushioned collar inside the hood provides extra warmth around the neck
- Detachable Hood with adjustable draw cord
- Zip closure to chin to keep Wind and Rain out and Warmth in
- Deep vertical Side Pockets with zip closure
- Internal Pockets with button closure
- Seamless, stitch free 3D Cut design with back drop tail
- Wrinkle free and Easy fit
- Internal embroidery zip opening

#### JK58 - UNISEX SUSTAINABLE SEAMLESS PARKA JACKET (3D CUT)

LADIES REF	8	10	12	14	16	18	20	22	24	26/28
SIZE	2XS	XS	S	M	L	XL	2XL	3XL	5XL	7XL
HALF CHEST	52	55	58	60.5	63	66	69	72	78	84
BODY LENGTH	65/71	69/75	71/77	73/79	75/81	77/83	79/85	81/87	82/88	83/89



BLACK



NAVY



BACK

## JK57

### JACQUARD FLEECE BOMBER JACKET

#### FABRIC

300gsm - 100% Polyester.

#### STYLE

- Textured fleece main fabric
- Softshell fabric on shoulder and side panels
- Mechanical stretch for greater comfort
- Front right hand chest pocket with zipper
- High zip-up neckline with soft rib insert for added comfort
- Ribbed hem and sleeve cuff
- Side pockets with warp knitted soft lining
- Large internal pockets
- YKK zips
- Modern fit

#### JK57 - MENS JACQUARD KNITTED FLEECE JACKET

MODERN FIT	S	M	L	XL	2XL	3XL	5XL	7XL
HALF CHEST	56.5	59	62	65	68	71	77	83
BODY LENGTH	71	73	75	77	79	80	81	82



## JK50

### LONGLINE STADIUM OXFORD/FLEECE JACKET

#### FABRIC

155gsm - Oxford shell, outer: 100% Polyester, inner: 100% Polyester Polar Fleece.

#### STYLE

Superb tailoring makes this a most practical, cool weather garment. Two outside and two inside pockets. Outer with water repellent oxford shell, inner with thick anti-pill Polar Fleece. Hideaway hood concealed in collar. Front chunky zip under press-studded storm flap. High wind collar and adjustable cuff with Velcro flap. Embroidery accessible.

#### JK50 - UNISEX LONGLINE STADIUM JACKET

EASY FIT	2XS	XS	S	M	L	XL	2XL	3XL	5XL	7XL
LADIES REFERENCE	8	10	12	14	16	18	20	22	24/26	28/30
HALF CHEST	51	54	57.5	60	62.5	65	67.5	70	75	80
BODY LENGTH	90	92	94	96	98	99	100	101	102	103





## JK18

### TEAMMATE 3-IN-1 JACKET WITH REVERSIBLE VEST

#### FABRIC

140gsm - Shell: Nylon Taslon, lining: Taffeta (jacket), Polar Fleece (vest), Outer: 100% Nylon, inner: 100% Polyester.

#### STYLE

Removable, reversible vest inside jacket. Hideaway hood concealed in collar. Concealed zippered embroidery access. Silver reflective piping.



BLACK/GREY

BLACK/RED

NAVY/NAVY

NAVY/RED

NAVY/WHITE

RED/BLACK



BLACK/GREY

BLACK/RED

NAVY/NAVY

NAVY/RED

NAVY/WHITE

RED/BLACK



DOUBLE ZIPPER PULLER FOR JACKET



VEST REVERSE

#### JK18 - UNISEX TEAMMATE 3-IN-1 JACKET

#### NAVY/NAVY

EASY FIT	S	M	L	XL	2XL	3XL	5XL	7XL
HALF CHEST	62.5	65.0	67.5	70.0	72.5	75.0	80.0	85.0
BODY LENGTH	75.0	77.0	79.0	81.0	83.0	85.0	87.0	89.0

#### UNISEX REVERSIBLE VEST

EASY FIT	S	M	L	XL	2XL	3XL
HALF CHEST	58.5	61.0	63.5	66.0	68.5	71.0
BODY LENGTH	66.0	68.0	70.0	72.0	74.0	76.0



## JK21/JK21K

### CHAMPION CONTRAST TRACK JACKET

#### FABRIC

100gsm - Outer: ripstop, inner: mesh, shell/lining: 100% Polyester.

#### STYLE

Light weight jacket with contrasting raglan sleeves. Piping on collar and sides. Two-side pockets. Front zipper.

#### JK21 - UNISEX CONTRAST TRACK JACKET

EASY FIT	S	M	L	XL	2XL	3XL
HALF CHEST	62.5	65	67.5	70	72.5	75
BODY LENGTH	74	76	78	80	82	84

#### JK21K - KIDS CONTRAST TRACK JACKET

EASY FIT	4K	6K	8K	10K	12K	14K
HALF CHEST	48	51	54	57	60	63
BODY LENGTH	50	53	57	60	64	67



## TP21/TP21Y

### CHAMPION TRACK PANTS

#### FABRIC

100gsm - Outer: ripstop, inner: mesh, shell/lining: 100% Polyester.

#### STYLE

Zip-up leg opening. Half-leg lining with woven fabric for ease of dressing.

#### TP21 - UNISEX TRACK PANTS

EASY FIT	S	M	L	XL	2XL	3XL
WAIST RELAXED	69	74	79	84	89	94
OUTER LEG	104	106	108	110	112	112

#### TP21Y - KIDS TRACK PANTS

EASY FIT	4K	6K	8K	10K	12K	14K
WAIST RELAXED	50	54	58	62	64	68
OUTER LEG	65	72	80	88	95	98



## JK53/JK53K

### LEGEND CONTRAST WARM-UP JACKET

#### FABRIC

100gsm - Shell/lining: 100% Polyester.

#### STYLE

Breathable mesh panels under arm and on sides. Front and back contrast panels, and piping. Raglan sleeves. Sleeve lined with 100% Polyester Taffeta. Centre front zipper. Reinforced slash front pockets with zippers. Elastic cuffs. Open bottom with elastic drawcord, cordlock and back tail. Water repellent.

#### JK53 - UNISEX CONTRAST WARM-UP JACKET

EASY FIT	XS	S	M	L	XL	2XL	3XL
HALF CHEST	55	57.5	60	62.5	65	67.5	70
BACK CENTRE LENGTH	68/72	70/74	72/76	74/78	76/80	78/82	80/84

#### JK53K - KIDS CONTRAST WARM-UP JACKET

EASY FIT	6K	8K	10K	12K	14K
HALF CHEST	42.5	45	47.5	50	52.5
BACK CENTRE LENGTH	53/57	56/60	59/63	62/66	65/69



WATER REPELLENT



## TP53/TP53Y

### LEGEND WARM-UP PANTS

#### FABRIC

100gsm - Shell/lining: 100% Polyester.

#### STYLE

Elastic band and zip up leg opening for ease of dressing.

#### TP53 - UNISEX WARM-UP PANTS

EASY FIT	XS	S	M	L	XL	2XL	3XL
WAIST RELAXED	66	70	74	78	82	86	90
OUTER LEG	101	103	105	107	109	111	113

#### TP53Y - KIDS WARM-UP PANTS

EASY FIT	6K	8K	10K	12K	14K
WAIST RELAXED	48	52	56	60	64
OUTER LEG	74	80	86	92	98



WATER REPELLENT



## JK01/JK01K

### STADIUM OXFORD/FLEECE JACKET

#### FABRIC

155gsm - Oxford shell, outer: 100% Polyester, inner: 100% Polyester Polar Fleece.

#### STYLE

Superb tailoring makes this a most practical, cool-weather garment. Outer with water repellent oxford shell, inner with thick anti-pill Polar Fleece. Hide-away hood with drawstring closure. Front chunky zip under press-studded storm flap. High wind collar and adjustable cuff with velcro flap. Embroidery accessible.



#### JK01 - UNISEX OXFORD/FLEECE JACKET

EASY FIT	XS	S	M	L	XL	2XL	3XL	5XL	7XL
HALF CHEST	58	62	65	68	71	74	77	83	89
BODY LENGTH	72	75	78	81	84	87	90	91	92

#### JK01K - KIDS OXFORD/FLEECE JACKET

EASY FIT	4K - 6K	6K - 8K	8K - 10K	10K - 12K	12K - 14K
HALF CHEST	43	46.0	49.0	52.0	55.0
BODY LENGTH	50	55.0	60.0	65.0	70.0







## JK33/JK33K/JK34

### ASPEN SOFTSHELL™ HOODED JACKET

#### FABRIC

320gsm - Bonded Softshell™, shell face: 90% Polyester, 10% Elastane, shell back: 100% Polyester.

#### STYLE

Water and wind resistant, breathable, tough wearing and insulative. Detachable hood. Technologically advanced 4-way stretch (up - down and left - right).



#### JK33 - MENS SOFTSHELL™ HOODED JACKET

MODERN FIT	S	M	L	XL	2XL	3XL	4XL	5XL
HALF CHEST	57.5	60.0	62.5	65.0	67.5	70.0	72.5	75.0
BODY LENGTH	71.5	73.5	75.5	77.5	79.5	81.5	83.5	85.5

#### JK33K - KIDS SOFTSHELL™ HOODED JACKET

MODERN FIT	6K - 8K	8K - 10K	10K - 12K	12K - 14K
HALF CHEST	46	49	52	55
BODY LENGTH	53	58	63	68

#### JK34 - LADIES SOFTSHELL™ HOODED JACKET

MODERN FIT	8	10	12	14	16	18
HALF CHEST	50.0	52.5	55.0	57.5	60.0	62.5
BODY LENGTH	62.0	64.0	66.0	68.0	70.0	72.0



FABRIC



WATER & WIND  
RESISTANT



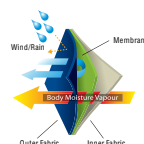
TOUGH WEARING



INSULATIVE



STRETCH





## JK15/JK16

### ROSEWALL SOFTSHELL™ SPORT JACKET

#### FABRIC

290gsm - Bonded Softshell™

shell face: 96% Polyester, 4% Elastane, shell back: 100% Polyester.

#### STYLE

Subtle, stylish and contemporary Softshell™ jacket. Contrasting Polar Fleece inners, Lightweight, water and wind resistant. Longer back tail creates extra warmth.

#### JK15 - MENS SOFTSHELL™ SPORT JACKET

MODERN FIT	S	M	L	XL	2XL	3XL	4XL	5XL
HALF CHEST	57.5	60	62.5	65	67.5	70	72.5	75
BODY LENGTH	70/73	72/75	74/77	76/79	78/81	80/83	81/84	82/85

#### JK16 - LADIES SOFTSHELL™ SPORT JACKET

MODERN FIT	8	10	12	14	16	18
HALF CHEST	50	52.5	55	57.5	60	63
BODY LENGTH	62/65	64/67	66/69	68/71	70/73	72/75



FABRIC



WATER & WIND  
RESISTANT



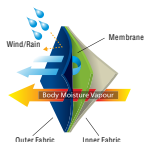
TOUGH WEARING



INSULATIVE



STRETCH



BLACK/BLACK



BLACK/CYAN



BLACK/ORANGE



BLACK/RED



NAVY/NAVY



## JK45/JK46

### ROSEWALL SOFTSHELL™ SPORT VEST

#### FABRIC

290gsm - Bonded Softshell™ shell face: 96% Polyester, 4% Elastane, shell back: 100% Polyester.

#### STYLE

Contrasting Polar Fleece inners, inside collar and pocket zips. Longer back tail for extra warmth. Water and wind resistant.

#### JK45 - MENS SOFTSHELL™ SPORT VEST

MODERN FIT	S	M	L	XL	2XL	3XL	4XL	5XL
HALF CHEST	56	58.5	61	63.5	66	68.5	71	73.5
BODY LENGTH	67/70	69/72	71/74	73/76	75/78	77/80	78/81	79/82

#### JK46 - LADIES SOFTSHELL™ SPORT VEST

MODERN FIT	8	10	12	14	16	18
HALF CHEST	48.5	51	53.5	56	58.5	61
BODY LENGTH	59/62	61/64	63/66	65/68	67/70	69/72



BLACK/CYAN



BLACK/ORANGE



BLACK/RED



FABRIC



WATER & WIND  
RESISTANT



TOUGH WEARING



INSULATIVE



STRETCH





# JK23/JK24

## SOFTSHELL™ HI-TECH JACKET

**FABRIC**  
 340gsm - Bonded Softshell™,  
 shell face & back: 90% Polyester, 10% Elastane.  
 Inside back: 100% polyeste.

**STYLE**  
 Water and wind resistant, breathable, tough wearing  
 and insulative. Hi-tech 4-way stretch  
 (up - down and left- right).



JK23 - MENS SOFTSHELL™ HI-TECH JACKET								
MODERN FIT	S	M	L	XL	2XL	3XL	4XL	5XL
HALF CHEST	57.0	59.5	62.0	64.5	67.0	69.5	72.0	74.5
BODY LENGTH	68.5	70.5	72.5	74.5	76.5	78.5	80.5	82.5

JK24 - LADIES SOFTSHELL™ HI-TECH JACKET							
MODERN FIT	8	10	12	14	16	18	
HALF CHEST	51.5	54.0	56.5	59.0	61.5	64.0	
BODY LENGTH	59.0	61.0	63.0	65.0	67.0	69.0	





## JK25/JK26

### SOFTSHELL™ HI-TECH VEST

#### FABRIC

340gsm - Bonded Softshell™, shell face & back: 90% Polyester, 10% Elastane. Inside back: 100% Polyester.

#### STYLE

Water and wind resistant, breathable, tough wearing and insulative. Hi-tech 4-way stretch (up, down and left, right).



#### JK25 - MENS SOFTSHELL™ HI-TECH VEST

MODERN FIT	S	M	L	XL	2XL	3XL	4XL	5XL
HALF CHEST	55	57.5	60	62.5	65	67.5	70	72.5
BODY LENGTH	67.5	69.5	71.5	73.5	75.5	77.5	79	81

#### JK26 - LADIES SOFTSHELL™ HI-TECH VEST

MODERN FIT	8	10	12	14	16	18
HALF CHEST	48.0	50.0	52.0	54.0	56.0	58.0
BODY LENGTH	59.0	61.0	63.0	65.0	67.0	69.0



BLACK

CHARCOAL

NAVY

RED



FABRIC



WATER & WIND  
RESISTANT



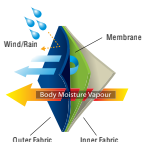
TOUGH WEARING



INSULATIVE



STRETCH





## JK31/JK32

### WHISTLER SOFTSHELL™ CONTRAST JACKET

#### FABRIC

320gsm - Bonded Softshell™, shell face: 90% Polyester, 10% Elastane, shell back: 100% Polyester.

#### STYLE

Water and wind resistant, breathable, tough wearing and insulative. Hi-tech 4-way stretch (up, down and left, right). Contrasting collar and side panels. Heat-sealed pocket on left sleeve.

#### JK31 - MENS SOFTSHELL™ CONTRAST JACKET

MODERN FIT	S	M	L	XL	2XL	3XL	4XL	5XL
HALF CHEST	57.5	60.0	62.5	65.0	67.5	70.0	72.5	75.0
BODY LENGTH	70.0	72.0	74.0	76.0	78.0	80.0	82.0	84.0

#### JK32 - LADIES SOFTSHELL™ CONTRAST JACKET

MODERN FIT	8	10	12	14	16	18
HALF CHEST	50.0	52.5	55.0	57.5	60.0	62.5
BODY LENGTH	62.0	64.0	66.0	68.0	70.0	72.0



BLACK/BLACK

BLACK/GREY

MID BLUE/GREY

GREEN GREY  
(JK32 ONLY)



FABRIC



WATER & WIND  
RESISTANT



TOUGH WEARING



INSULATIVE



STRETCH







## JK77

### ARENA NYLON RIPSTOP JACKET WITH HOOD

#### FABRIC

105gsm - Nylon ripstop, 100% Polyester ripstop with PU coating Breathability: 3000mm.

#### STYLE

Contrasting colour on side panels and sleeves with piping. Raglan sleeves with elasticated adjustable cuffs. Concealed detachable hood. Two-side pockets with zip closure and vertical zipped pocket on right hand chest. Front storm flap with concealed studs. Polar Fleece lining with pockets.

#### JK77 - UNISEX NYLON RIPSTOP JACKET WITH HOOD

MODERN FIT	2XS	XS	S	M	L	XL	2XL	3XL	5XL	7XL
LADIES REF	10	12	14	16	18	20	22	24	26	28/30
HALF CHEST	52.5	55	57.5	60	62.5	65	67.5	70	75	80
BODY LENGTH	68	70	72	74	76	78	80	82	84	86



BLACK/WHITE/GOLD BLACK/WHITE/GREEN BLACK/WHITE/GREY BLACK/WHITE/ORANGE BLACK/WHITE/RED



BLACK/WHITE/ROYAL NAVY/WHITE/ROYAL NAVY/WHITE/GOLD NAVY/WHITE/RED



WATER & WIND RESISTANT INSULATIVE



## JK28

### BATHURST TRI-COLOUR JACKET WITH HOOD

#### FABRIC

200gsm - Shell: Nylon Taslon, lining: micro Polar Fleece, outer: 100% Nylon, inner: 100% Polyester.

#### STYLE

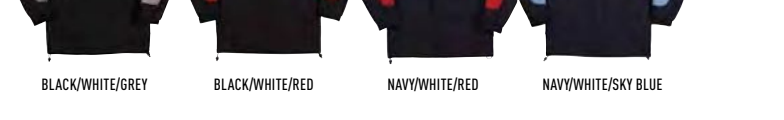
Contrast-coloured jacket with double-stitched seams across back and front. Adjustable cuffs with velcro tabs. Front pockets on both sides. Drawcord at hem. Inside garment features: chest jet pocket, phone pouch, pen holder and an extra big pocket at the lower waist position. Concealed zippered embroidery access.

#### JK28 - UNISEX TRI-COLOUR JACKET WITH HOOD

EASY FIT	XS	S	M	L	XL	2XL	3XL
HALF CHEST	58.5	61.0	63.5	66.0	68.5	71.0	73.5
BODY LENGTH	75.0	77.0	79.0	81.0	83.0	85.0	87.0



BLACK/WHITE/GREY BLACK/WHITE/RED NAVY/WHITE/RED NAVY/WHITE/SKY BLUE



WATER REPELLENT WIND & COLD PROOF TOUGH WEARING INSULATIVE



## JK48

### EVEREST HEAVY QUILTED JACKET

#### FABRIC

100% Polyester.

#### STYLE

Pongee shell with Polyester inners and front zipper. Inner pocket on left chest. Inner bottom zip for embroidery. Storm flap reduces moisture entering garment. Reverse front pockets ensure items not to fall out.

#### JK48 - UNISEX HEAVY QUILTED JACKET

MODERN FIT	2XS	XS	S	M	L	XL	2XL	3XL	5XL	7XL
LADIES REF	8	10	12	14	16	18	20	22	26	30
HALF CHEST	51.5	54.5	57.5	60	62.5	65	67.5	70	75	80
BODY LENGTH	65/68	68/71	71/74	73/76	75/78	77/80	79/82	81/84	82/85	83/86



WIND & COLD  
PROOF



INSULATIVE



EASY CARE



BLACK



NAVY



## JK47

### EVEREST HEAVY QUILTED VEST

#### FABRIC

100% Polyester.

#### STYLE

Pongee shell with Polyester inners and front zipper. Inner pocket on left chest. Inner bottom zip for embroidery. Storm flap reduces moisture entering garment. Reverse front pockets ensure items not to fall out.

#### JK47 - UNISEX HEAVY QUILTED VEST

MODERN FIT	2XS	XS	S	M	L	XL	2XL	3XL	5XL	7XL
LADIES REF	8	10	12	14	16	18	20	22	26	30
HALF CHEST	51.5	54.5	57.5	60	62.5	65	67.5	70	75	80
BODY LENGTH	61/66	64/69	67/72	69/74	71/76	73/78	75/80	77/82	78/83	79/84



WIND & COLD  
PROOF



INSULATIVE



EASY CARE



BLACK



NAVY



## JK13/JK14

### FLINDERS WOOL BLEND CORPORATE JACKET

#### FABRIC

400gsm - Wool blend, 50% wool, 50% viscose-blended melton.

#### STYLE

Zip front with two welt pockets. Two internal pockets. Concealed zippered embroidery access. Modern cut and easy care.

#### JK13 - MENS WOOL BLEND CORPORATE JACKET

MODERN FIT	S	M	L	XL	2XL	3XL	4XL	5XL
HALF CHEST	56.5	59	61.5	64	67	70	73	76
BODY LENGTH	70	72	74	75	76	77	78	79

#### JK14 - LADIES WOOL BLEND CORPORATE JACKET

MODERN FIT	8	10	12	14	16	18	20	22	24
HALF CHEST	50	52.5	55	57.5	60	63	66	69	72
BODY LENGTH	61	63	65	67	68	69	70	71	72



WIND & COLD  
PROOF



TOUGH WEARING



INSULATIVE



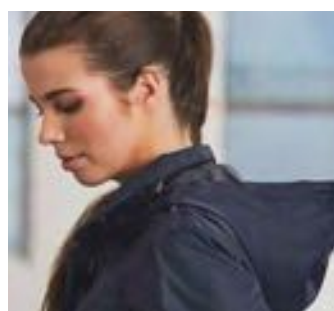
EASY CARE



BLACK

NAVY





## JK35/JK36

### VERSATILE NYLON JACKET WITH HOOD

#### FABRIC

Jacquard Taslon, outer: 100% Nylon, inner: 100% Polyester Taffeta.

#### STYLE

Two-side pockets with zipper closure. Storm flap with velcro and stud button closure. Sleeves velcro adjustments. Concealed hood. Hem-elasticised string with adjustment tabs. Zips with reversible JK37/JK38 vests to make 3-in-1 set (sold separately).



#### JK35 - MENS NYLON JACKET WITH HOOD

MODERN FIT	S	M	L	XL	2XL	3XL	4XL	5XL	7XL
HALF CHEST	57.5	60	62.5	65	67.5	70	72.5	75	80
BODY LENGTH	70	72	74	76	78	80	81	82	83

#### JK36 - LADIES NYLON JACKET WITH HOOD

MODERN FIT	8	10	12	14	16	18
HALF CHEST	50	52.5	55	57.5	60	62.5
BODY LENGTH	62	64	66	68	70	72



WATER REPELLENT



WIND & COLD  
PROOF

## JK37/JK38

### VERSATILE NYLON REVERSIBLE VEST

#### FABRIC

Side A - Semi-dull Nylon Taffeta, 100% Nylon. Side B - outer/filler: 100% Polyester.

#### STYLE

Two-side pockets. Reversible. Zips into JK35/JK36 jackets to make 3-in-1 set (sold separately).

#### JK37 - MENS NYLON REVERSIBLE VEST

MODERN FIT	S	M	L	XL	2XL	3XL	4XL	5XL	7XL
HALF CHEST	55.0	57.5	60.0	62.5	65.0	67.5	70.0	72.5	77.5
BODY LENGTH	67.0	69.0	71.0	73.0	75.0	77.0	78.0	79.0	80.0

#### JK38 - LADIES NYLON REVERSIBLE VEST

MODERN FIT	8	10	12	14	16	18
HALF CHEST	47.5	50.0	52.5	55.0	57.5	60.0
BODY LENGTH	59.0	61.0	63.0	65.0	67.0	69.0



BLACK/GREY

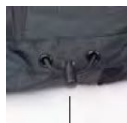


NAVY/GREY



REVERSED

DRAW CORD  
WITH ADJUST-  
ABLE TAB



CONCEALED  
HOOD INSIDE THE  
COLLAR

DETACHABLE  
JK37/JK38  
VEST INSIDE

COMFORTING  
TRICOT BRUSHED  
FABRIC ON  
STORM FLAP  
(CHIN GURAD)

VELCRO CLOSURE  
ADJUSTABLE  
CUFFS

DRAW CORD  
WITH ADJUST-  
ABLE TAB



METAL  
STUDS ON  
STORM FLAP

VELCRO  
CLOSURE

NOTE: JACKETS AND VEST ARE SOLD  
SEPARATELY





## JK22

### CASCADE TRI-COLOUR CONTRAST REVERSIBLE JACKET

#### FABRIC

200gsm - Shell: Nylon Taslon, lining: micro Polar Fleece, outer: 100% Nylon, inner: 100% Polyester.

#### STYLE

Two-tone reversible jacket with white piping. Double-stitched seam across back and front. Adjustable cuffs and velcro tabs. Two front pockets. Drawcord at hem. Concealed zippered embroidery access. Wind and water proof.

#### JK22 - UNISEX TRI-COLOUR REVERSIBLE JACKET

MODERN FIT	XS	S	M	L	XL	2XL	3XL
HALF CHEST	54.5	57.0	59.5	62.0	64.5	67.0	69.5
BODY LENGTH	70.0	72.5	75.0	77.5	80.0	82.5	85.0



BLACK/WHITE/GREY



NAVY/WHITE/RED



NAVY/WHITE/SILVER



REVERSE



WATER REPELLENT



WIND & COLD  
PROOF



REVERSIBLE



## JK41/JK42

### ACLAND HEATHER BONDED CORAL FLEECE JACKET WITH HOOD

#### FABRIC

420gsm - Shell: 80% Polyester, 20% Cotton, shell back: 100% Polyester.

#### STYLE

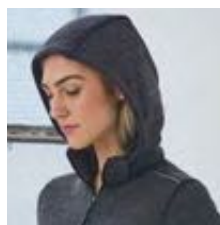
Detachable hood with coral fleece inners. Front zipped pockets for storage and hand warmth. Thumb hole feature for added warmth. Inner pockets.

#### JK41 - MENS HEATHER BONDED CORAL FLEECE JACKET WITH HOOD

MODERN FIT	S	M	L	XL	2XL	3XL	4XL	5XL
HALF CHEST	55	57.5	60	62.5	65	67.5	70	72.5
BODY LENGTH	72	74	76	78	80	82	83	84

#### JK42 - LADIES HEATHER BONDED CORAL FLEECE JACKET WITH HOOD

MODERN FIT	8	10	12	14	16	18
HALF CHEST	46.5	49	51.5	54	56.5	60
BODY LENGTH	65	67	69	71	73	75



DETACHABLE HOOD



THUMB HOLE FEATURE



BLACK

## JK43/JK44

### BRISTOL HEATHER BONDED CORAL FLEECE JACKET WITH HOOD AND POLY TRIM

#### FABRIC

420gsm Body Shell: 96%Polyester, 4% Elastane, Body Fill: 100% Polyester. Sleeve Shell: 80%Polyester, 20% Cotton, Sleeve back: 100%Polyester.

#### STYLE

Quilted Body Coral fleece inners and thumb hole features for added warmth. Front zipped pockets for storage and hand warmth. Quilted body has inner pocket for embroidery.

#### JK43 - MENS HEATHER BONDED CORAL FLEECE JACKET WITH HOOD AND POLY TRIM

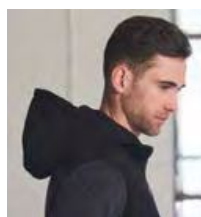
MODERN FIT	S	M	L	XL	2XL	3XL	4XL	5XL
HALF CHEST	55	57.5	60	62.5	65	67.5	70	72.5
BODY LENGTH	72	74	76	78	80	82	83	84

#### JK44 - LAIDES' HEATHER BONDED CORAL FLEECE JACKET WITH HOOD AND POLY TRIM

MODERN FIT	8	10	12	14	16	18
HALF CHEST	46.5	49	51.5	54	56.5	60
BODY LENGTH	65	67	69	71	73	75



THUMB HOLE FEATURE.



ATTACHED HOOD



BLACK



FABRIC



WATER & WIND RESISTANT



TOUGH WEARING



INSULATIVE



STRETCH



FABRIC



WATER & WIND RESISTANT



TOUGH WEARING



INSULATIVE



STRETCH



## JK02

### CIRCUIT OXFORD SPORT JACKET

#### FABRIC

155gsm - Oxford, mesh lining, 100% Polyester.

#### STYLE

Water-repellent oxford shell jacket with silver reflective piping, charcoal-coloured fleece-lined collar and inner mesh lining. Double front and inside pockets. Hidden drawcord at the hem. Hidden mobile phone pocket on front. Concealed zippered embroidery access for chest and back. Adjustable velcro cuffs.

#### JK02 - UNISEX OXFORD SPORT JACKET

EASY FIT	XXS	XS	S	M	L	XL	2XL	3XL
HALF CHEST	56.0	58.5	61.0	63.5	66.0	68.5	71.0	73.5
BODY LENGTH	73.0	75.0	77.0	79.0	81.0	83.0	85.0	87.0



BLACK

NAVY

RED



## JK27

### CHALET NYLON JACKET

#### FABRIC

Shell: Nylon Taslon, lining: micro Polar Fleece, outer: 100% Nylon, inner: 100% Polyester.

#### STYLE

Two concealed chest pockets with zip closure. Two-side zippered front pockets. One lining pocket with velcro closure. Concealed hood. Back with concealed ventilation mesh. Velcro adjustments on sleeves. Hem strings with adjustment tabs.

#### JK27 - MENS CHALET JACKET

MODERN FIT	S	M	L	XL	2XL	3XL	4XL	5XL
HALF CHEST	57.5	60.0	62.5	65.0	67.5	70.0	72.5	75.0
BODY LENGTH	71/75	73/77	75/79	77/81	79/83	80/84	81/85	82/86



BLACK

NAVY



AIR FLOW VENTS



INSULATIVE



## JK29/JK30

### NYLON RIPSTOP PADDED VEST

#### FABRIC

90gsm - Nylon ripstop, outer: 100% Nylon, filling/lining: 100% Polyester.

#### STYLE

Fully lined and polyfill. Full front zipper with tape puller. Two zippered welt pockets. Embroidery accessible at inner hem.

#### JK29 - MENS NYLON RIPSTOP PADDED VEST

MODERN FIT	S	M	L	XL	2XL	3XL
HALF CHEST	57.5	60.0	62.5	65.0	67.5	70.0
BODY LENGTH	66/71	68/73	70/75	72/77	74/79	76/81

#### JK30 - LADIES NYLON RIPSTOP PADDED VEST

MODERN FIT	8	10	12	14	16	18
HALF CHEST	50.5	53.0	55.5	58.0	60.5	63.0
BODY LENGTH	59/63	61/65	63/67	65/69	67/71	69/73



WIND & COLD  
PROOF



INSULATIVE



BLACK



NAVY



JK51/JK52  
CATIONIC QUILTED JACKET

**FABRIC**  
320gsm - 100% Polyester.

**STYLE**  
Bonded Cationic Heather quilted Jacket has a brushed inside adjustable hoodie. The Jacket also has a full zip front and zip front pockets.

JK51 - MENS CATIONIC QUILTED JACKET								
MODERN FIT	XS	S	M	L	XL	2XL	3XL	5XL
HALF CHEST	54	56.5	59	62	65	68	71	77
BODY LENGTH	70	72	74	76	78	79	80	81

JK52 - LADIES CATIONIC QUILTED JACKET									
MODERN FIT	6	8	10	12	14	16	18	20	22
HALF CHEST	46	48.5	51	54	57	60	63	66	69
BODY LENGTH	63	64	65	66	67	68	69	70	71



WIND & COLD  
PROOF



INSULATIVE



CHARCOAL



BACK VIEW



## TP25/TP25K

### ADULTS AND KIDS FRENCH TERRY SWEAT PANTS

#### FABRIC

Poly/Cotton French Terry

#### STYLE

65% Polyester/35% Cotton - 320gsm

- Ribbed waistband with functional draw cords
- Tapered legs with rib cuffs
- Duel side pockets with zips
- Patch pocket on right hip
- Flexibility and comfort during activities

#### TP25 - ADULTS FLEECE TRACK PANTS

LADIES REF	8/10	12	14	16	18	20	22	24	26/28
EASY FIT	XS	S	M	L	XL	2XL	3XL	5XL	7XL
WAIST RELAXED	68	72	77	82	87	92	97	107	117
INNER LEG	74	75	76	77	77	77	77	77	77

#### TP25K - KIDS FRENCH TERRY TRACK PANTS

EASY FIT	4K	6K	8K	10K	12K	14K
WAIST RELAXED	48	50	52	56	60	64
INNER LEG	44	50	56	62	67	72



BLACK



GREY



NAVY



WIND & COLD  
PROOF



## JK55/JK56

### WATERPROOF PERFORMANCE JACKET

#### FABRIC

100gsm - 94% Polyester/6% Elastane.

Rating: 5000mm, Breathability: 3000g/m2.

#### STYLE

Ultimate performance heather waterproof seam sealed jacket. It provides maximum comfort and protection whilst delivering complete design styling with full front covered zip, zip pockets, velcro cuffs and adjustable hood.

#### JK55 - MENS WATERPROOF PERFORMANCE JACKET

MODERN FIT	XS	S	M	L	XL	2XL	3XL	5XL
HALF CHEST	54	56.5	59	62	65	68	71	77
BODY LENGTH	72	74	76	78	80	81	82	83

#### JK56 - LADIES WATERPROOF PERFORMANCE JACKET

MODERN FIT	6	8	10	12	14	16	18	20	22	24
HALF CHEST	46	48.5	51	54	57	60	63	66	69	72
BODY LENGTH	66	67	68	69	70	71	72	73	74	75



WATER PROOF



BLACK



STONE



BACK VIEW



## FL25/FL26

### HALF ZIP LONG SLEEVE SWEAT TOP

#### FABRIC

240gsm 92% Polyester/8% Elastane.

#### STYLE

Warm up Heather top with Half zip front and horizontal feature stitch. Sleeve has a double cuff.

#### FL25 - MENS HALF ZIP LONG SLEEVE SWEAT TOP

MODERN FIT	XS	S	M	L	XL	2XL	3XL	5XL
HALF CHEST	51	53.5	56	58.5	61	64	67	73
BODY LENGTH	68	70	72	74	76	78	79	80

#### FL26 - LADIES HALF ZIP LONG SLEEVE SWEAT TOP

SIZE	6	8	10	12	14	16	18	20	22	24
HALF CHEST	43.5	46	48.5	51	54	57	60	63	66	69
BODY LENGTH	63	64	65	66	67	68	69	70	71	72



CHARCOAL



BACK



## JK10/JK10K

### RAIN FOREST OUTDOOR SPRAY JACKET WITH HOOD IN POUCH

#### FABRIC

100% Nylon Taffeta.

#### STYLE

Waterproof with tape-sealed seams. Concealed hood. Jacket folds into a separate pouch.

#### JK10 - UNISEX OUTDOOR SPRAY JACKET WITH HOOD IN POUCH

EASY FIT	XS	S	M	L	XL	2XL	3XL
HALF CHEST	60.5	63.0	65.5	68.0	70.5	73.0	75.5
BODY LENGTH	73.0	75.5	78.0	80.5	83.0	85.5	88.0

#### JK10K - KIDS OUTDOOR SPRAY JACKET WITH HOOD IN POUCH

EASY FIT	4K - 06K	6K - 8K	8K - 10K	10K - 12K	12K - 14K
HALF CHEST	46.0	49.0	52.0	55.0	58.0
BODY LENGTH	54.0	58.0	62.0	66.0	70.0



BLACK



NAVY



RED



ROYAL



WATER PROOF





## JK39

### ROADRUNNER SEAMLESS HEATHER SPORT JACKET

#### FABRIC

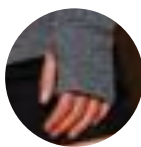
190gsm - 50% Nylon, 50% Polyester.

#### STYLE

Light weight sport jacket. Breathable under arms and side panels. Front zipped pockets for storage and hand warmth. Thumb hole features for added warmth.

#### JK39 - UNISEX SEAMLESS HEATHER SPORT JACKET

SLIM FIT	XS	S	M	L	XL
LADIES SIZE (REF)	08	10	12	14	16
HALF CHEST	40	42.5	45	47.5	50
BODY LENGTH	65	67	69	71	73



THUMB HOLE FEATURE.



BLACK



## FL17/FL18

### PURSUIT BONDED FLEECE CONTRAST FULL-ZIP HOODIE

#### FABRIC

350gsm - Bonded fleece , 50% Polyester, 50% Cotton.

#### STYLE

Made from bonded fleece with contrasting-coloured micro Polar Fleece inside and Cotton Jersey on outside. Contrasting-coloured drawstrings. Self-coloured zip on front. Elastic waistband and sleeve cuffs.

#### FL17 - MENS BONDED FLEECE CONTRAST FULL-ZIP HOODIE

MODERN FIT	S	M	L	XL	2XL	3XL
HALF CHEST	57.5	60	62.5	65	68	71
BODY LENGTH	70	72	74	76	78	80

#### FL18 - LADIES BONDED FLEECE CONTRAST FULL-ZIP HOODIE

MODERN FIT	8	10	12	14	16	18
HALF CHEST	47.5	50	52.5	55	58	61
BODY LENGTH	60	62	64	66	68	70



BLACK/BLACK

BLACK/GREY

NAVY/GREY

NAVY/NAVY

RED/CHARCOAL



WIND & COLD  
PROOF





## FL03/FL03K/FL04

### DOUBLE BAY FLEECE FULL-ZIP HOODIE

#### FABRIC

340gsm - Fleece, 80% Cotton, 20% Polyester.

#### STYLE

A traditional fleece hoodie with full zip in the centre front. Two hand warmer pockets. A top design for work and outdoor activities. There are no drawcords on FL03K for safety reasons.

#### FL03 - MENS FLEECE FULL-ZIP HOODIE

EASY FIT	XS	S	M	L	XL	2XL	3XL	5XL
HALF CHEST	57.5	60	62.5	65	67.5	70	72.5	77.5
BODY LENGTH	68	70	72	74	76	78	80	82

#### FL03K - KIDS FLEECE FULL-ZIP HOODIE (NO DRAWCORDS)

EASY FIT	6K	8K	10K	12K	14K
HALF CHEST	42.0	45.0	48.0	51.0	54.0
BODY LENGTH	50.0	54.0	58.0	62.0	66.0

#### FL04 - LADIES FULL-ZIP FLEECE HOODIE

MODERN FIT	8	10	12	14	16	18
HALF CHEST	46.5	49.0	51.5	54.0	56.5	59.0
BODY LENGTH	60.0	62.0	64.0	66.0	68.0	70.0



BLACK

GREY

NAVY



RED  
(FL03K ONLY)

ROYAL  
(FL03K ONLY)



WIND & COLD  
PROOF

# FL07/FL07K/FL08

## WARM HUG FLEECE CLOSED-FRONT HOODIE

### FABRIC

340gsm - Fleece, 80% Cotton, 20% Polyester.

### STYLE

A traditional fleece hoodie. Closed front with kangaroo pocket. A top design for work and outdoor activities. There are no drawcords on FL07K for safety reasons.

#### FL07 - MENS FLEECE CLOSED-FRONT HOODIE

EASY FIT	S	M	L	XL	2XL	3XL	5XL
HALF CHEST	58.0	60.5	63.0	65.5	68.0	70.5	75.5
BODY LENGTH	68	70	72	74	76	78	80

#### FL07K - KIDS FLEECE CLOSED-FRONT HOODIE (NO DRAWCORDS)

EASY FIT	6K	8K	10K	12K	14K
HALF CHEST	42.0	45.0	48.0	51.0	54.0
BODY LENGTH	50.0	54.0	58.0	62.0	66.0

#### FL08 - LADIES FLEECE CLOSED-FRONT HOODIE

EASY FIT	8	10	12	14	16	18
HALF CHEST	46.5	49.0	51.5	54.0	56.5	59.0
BODY LENGTH	60.0	62.0	64.0	66.0	68.0	70.0



BLACK



BOTTLE



CHARCOAL  
(ADULTS ONLY)



GREY



MAROON



NAVY



RED



ROYAL



WIND & COLD  
PROOF

# FL09/FL09K

## PASSION FLEECE CONTRAST CLOSED-FRONT HOODIE

### FABRIC

320gsm - Fleece, 65% Polyester, 35% Cotton.

### STYLE

A fleece hoodie with contrasting colour hood lining and matching body colour draw strings. Close front with kangaroo pocket. A top design for work and outdoor activities. There are no drawcords on FL09K for safety reasons.

#### FL09 - UNISEX FLEECE CONTRAST CLOSED-FRONT HOODIE

EASY FIT	XS	S	M	L	XL	2XL	3XL	5XL
LADIES REF	12	14	16	18				
HALF CHEST	55.5	58	60.5	63	65.5	68	70.5	75.5
BODY LENGTH	66	68	70	72	74	76	78	80

#### FL09K - KIDS FLEECE CONTRAST CLOSED-FRONT HOODIE

EASY FIT	6k	8k	10k	12k	14k
LADIES REF				8	10
HALF CHEST	42	45	47.5	50	52.5
BODY LENGTH	52	56	62	64	66



BLACK/BLACK

BLACK/GOLD

GREY/GREY

GREY/NAVY



NAVY/NAVY

NAVY/RED

RED/RED



ROYAL/ROYAL

WHITE/WHITE







## FL11/FL11K

### LETTERMAN FLEECE CONTRAST VARSITY JACKET

#### FABRIC

320gsm - Poly/Cotton fleece, 65% Polyester, 35% Cotton fleece.

#### STYLE

Heavy ribbed collar, cuffs and waistband with contrasting stripes. Two front welt pockets. Press studs for front closure.

#### FL11 - UNISEX FLEECE CONTRAST VARSITY JACKET

MODERN FIT	3XS	2XS	XS	S	M	L	XL	2XL	3XL
LADIES (REF)	8/14K	10/16K	12	14	16	18	20	22	24
HALF CHEST	50	52.5	55	57.5	60	62.5	65	68	71
BODY LENGTH	62	64	66	68	70	72	74	75	76

#### FL11K - KIDS FLEECE CONTRAST VARSITY JACKET

MODERN FIT	6K	8K	10K	12K
HALF CHEST	40	42.5	45	47.5
BODY LENGTH	46	50	54	58



## TP01A/TP01K

### EAGLE TRADITIONAL FLEECE TRACK PANTS

#### FABRIC

320gsm - Poly/Cotton fleece, 65% Polyester, 35% Cotton fleece.

#### STYLE

Cotton face. Traditional fleece track pants that never go out of fashion. KIDS comes with zip, cuffs and knee pads.

#### TP01A - UNISEX TRADITIONAL FLEECE TRACK PANTS

	S	M	L	XL	2XL	3XL
EASY FIT	68	71	74	77	80	83
WAIST RELAXED	68	71	74	77	80	83
OUTER LEG	104	106	108	110	112	112

#### TP01K - KIDS TRADITIONAL FLEECE TRACK PANTS

	6K	8K	10K	12K	14K
EASY FIT	54	58	62	64	68
WAIST RELAXED	54	58	62	64	68
OUTER LEG	77	83	88	93	98



# FL19/FL19K

## CROXTON FLEECE CONTRAST CLOSED-FRONT HOODIE

**FABRIC**  
 320gsm - Fleece, 65% Polyester, 35% Cotton.

**STYLE**  
 A fashion fleece hoodie with contrasting-coloured shoulder panels and side piping. Thumb holes in cuffs for extra warmth. Contemporary fashion fit. The ultimate in casual comfort. There are no drawcords on FL19K for safety reasons.

FL19 - UNISEX FLEECE CONTRAST CLOSED-FRONT HOODIE								
EASY FIT	XS	S	M	L	XL	2XL	3XL	5XL
HALF CHEST	55.5	58	60.5	63	65.5	68	70.5	75.5
BODY LENGTH	68	70	72	74	76	78	80	82

FL19K - KIDS FLEECE CONTRAST CLOSED-FRONT HOODIE						
EASY FIT	4K	6K	8K	10K	12K	14K
HALF CHEST	39	42	45	47.5	50	52.5
BODY LENGTH	46	50	54	58	62	66



# FL01/FL01K

## EAGLE FLEECE AMERICAN STYLE CREW SWEAT TOP

### FABRIC

320gsm - Fleece, Cotton face, 80% Cotton, 20% Polyester.

### STYLE

A traditional fleece wind-cheater that never goes out of fashion.

#### FL01 - UNISEX FLEECE AMERICAN STYLE CREW SWEAT TOP

EASY FIT	S	M	L	XL	2XL	3XL	4XL	5XL
HALF CHEST	60.0	62.5	65.0	67.5	70.0	72.5	75.0	77.5
BODY LENGTH	72.0	74.0	76.0	78.0	80.0	82.0	84.0	86.0

#### FL01K - KIDS FLEECE AMERICAN STYLE CREW SWEAT TOP

EASY FIT	6K	8K	10K	12K	14K
HALF CHEST	42.0	45.0	48.0	51.0	54.0
BODY LENGTH	50.0	54.0	58.0	62.0	66.0



BLACK

NAVY



WIND & COLD  
PROOF



## FL02/FL02K

### FALCON FLEECE HALF-ZIP SWEAT TOP

#### FABRIC

320gsm - Fleece, Cotton face, 80% Cotton, 20% Polyester.

#### STYLE

A traditional fleecy sweat, self fabric collar with half front zip.

#### FL02 - MENS FLEECE HALF-ZIP SWEAT TOP

EASY FIT	S	M	L	XL	2XL	3XL	4XL	5XL
HALF CHEST	60.0	62.5	65.0	67.5	70.0	72.5	75.0	77.5
BODY LENGTH	72.0	74.0	76.0	78.0	80.0	82.0	84.0	86.0

#### FL02K - KIDS FLEECE HALF-ZIP SWEAT TOP

EASY FIT	6K	8K	10K	12K	14K
HALF CHEST	46.0	49.0	52.0	55.0	58.0
BODY LENGTH	49.5	53.5	57.5	61.5	65.5



BLACK

NAVY



WIND & COLD  
PROOF



FL02K

FL02



WIND & COLD  
PROOF



TOUGH WEARING



EASY CARE

## PF22

### BROMLEY POLAR FLEECE VEST

#### FABRIC

320gsm - 100% Polyester Polar Fleece.

#### STYLE

Modern fit. Interlocking Polyester collar and inner sleeves. Storm flap for added protection and reduced moisture.

#### PF22 - UNISEX POLAR FLEECE VEST

MODERN FIT	2XS	XS	S	M	L	XL	2XL	3XL	5XL	7XL
LADIES REF	8	10	12	14	16	18	20	22	24/26	28/30
HALF CHEST	48	51	54	56.5	59	61.5	64	66.5	71.5	76.5
BODY LENGTH	62	65	68	70	72	74	76	78	79	80



BLACK



CHARCOAL



NAVY



RED

## PF21/PF21K

### BEXLEY POLAR FLEECE HALF-ZIP PULLOVER

#### FABRIC

320gsm - 100% Polyester Polar Fleece.

#### STYLE

Modern fit. Interlocking Polyester collar and sleeve cuffs. Bent cuffs provide added flexibility and movement.

#### PF21 - UNISEX POLAR FLEECE HALF-ZIP PULLOVER

MODERN FIT	2XS	XS	S	M	L	XL	2XL	3XL	5XL	7XL
LADIES REF	8	10	12	14	16	18	20	22	24/26	28/30
HALF CHEST	51	54	57.5	60	62.5	65	67.5	70	75	80
BODY LENGTH	64	67	70	72	74	76	78	80	81	82

#### PF21K - KIDS POLAR FLEECE HALF-ZIP PULLOVER

EASY FIT	4K	6K	8K	10K	12K	14K
HALF CHEST	40	42.5	45	47.5	50	52.5
BODY LENGTH	48	52	56	60	64	68



WIND & COLD  
PROOF



TOUGH WEARING



EASY CARE

## PF01/PF11

### MT BULLER ANTI-PILL POLAR FLEECE HALF-ZIP PULLOVER

#### FABRIC

320gsm - Anti-pill Polar Fleece, 100% Polyester.

#### STYLE

Size-adjustable toggle at hem. Side pockets. A basic for an active lifestyle. Provides warmth and flexibility for winter wear. Suitable for skiers, mariners and casual street wearing. An ideal uniform or promotional jacket.

#### PF01 - UNISEX ANTI-PILL POLAR FLEECE HALF-ZIP PULLOVER

EASY FIT	2XS	XS	S	M	L	XL	2XL	3XL	4XL	5XL
HALF CHEST	55.0	57.5	60.0	62.5	65.0	67.5	70.0	72.5	75.0	77.5
BODY LENGTH	63.0	66.0	69.0	72.0	75.0	78.0	81.0	84.0	87.0	90.0

#### PF11 - KIDS ANTI-PILL POLAR FLEECE HALF-ZIP PULLOVER

EASY FIT	4K	6K	8K	10K	12K	14K	16K
HALF CHEST	39.0	42.5	46.0	49.5	53.0	56.5	60.0
BODY LENGTH	48.0	52.0	56.0	60.0	64.0	68.0	72.0





## PF07/PF07K/PF08

### FROST BONDED POLAR FLEECE FULL-ZIP FITTED JACKET

#### FABRIC

350gsm - Bonded Polar Fleece, 100% Polyester.

#### STYLE

Made from high quality anti-pill Polar Fleece. Extra deep pockets to keep hands warm.

#### PF07 - MENS BONDED POLAR FLEECE FULL-ZIP FITTED JACKET

SLIM FIT	S	M	L	XL	2XL	3XL	4XL	5XL
HALF CHEST	51.5	54.0	56.5	59.0	61.5	64.0	66.5	69.0
BODY LENGTH	70.0	72.0	74.0	76.0	78.0	80.0	82.0	84.0

#### PF07K - KIDS BONDED POLAR FLEECE FULL-ZIP FITTED JACKET

EASY FIT	4K	6K	8K	10K	12K	14K
HALF CHEST	37.0	39.5	42.0	44.5	47.0	49.5
BODY LENGTH	47.0	50.0	53.0	56.0	59.0	62.0

#### PF08 - LADIES BONDED POLAR FLEECE FULL-ZIP FITTED JACKET

SLIM FIT	8	10	12	14	16	18
HALF CHEST	43.0	45.5	48.0	50.5	53.0	55.5
BODY LENGTH	57.0	60.0	63.0	66.0	69.0	72.0



BLACK



NAVY



PF08



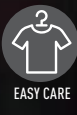
PF07K



WIND & COLD  
PROOF



TOUGH WEARING



EASY CARE



PF07

## PF09/PF09K/PF10

### DIAMOND BONDED POLAR FLEECE VEST

#### FABRIC

350gsm - Bonded Polar Fleece, 100% Polyester.

#### STYLE

Made from high quality anti-pill Polar Fleece. Extra deep pockets to keep hands warm. PF09 has two internal pockets.

#### PF09 - MENS BONDED POLAR FLEECE VEST

SLIM FIT	S	M	L	XL	2XL	3XL	4XL	5XL
HALF CHEST	56.5	59.0	61.5	64.0	66.5	69.0	71.5	73.0
BODY LENGTH	63.0	66.0	69.0	72.0	75.0	78.0	80.0	82.0

#### PF09K - KIDS BONDED POLAR FLEECE VEST

EASY FIT	4K	6K	8K	10K	12K	14K
HALF CHEST	36.5	39.0	41.5	44.0	46.5	49.0
BODY LENGTH	48.5	51.5	54.5	57.5	60.5	63.5

#### PF10 - LADIES BONDED POLAR FLEECE VEST

SLIM FIT	8	10	12	14	16	18
HALF CHEST	44.0	47.0	50.0	53.0	56.0	59.0
BODY LENGTH	57.0	60.0	63.0	66.0	69.0	72.0



BLACK



NAVY



PF09



PF09K



PF10



WIND & COLD  
PROOF



TOUGH WEARING



EASY CARE



## PF04A

### MARINER POLAR FLEECE/MICRO FIBRE CONTRAST REVERSIBLE VEST

#### FABRIC

Polar Fleece, micro fibre, 100% Polyester. Reversible.

#### STYLE

One side with Polar Fleece fabric and other side with water-proof micro fibre. Concealed zippered embroidery access. Contrasting colours. Suitable for sailing, water sports, cycling, walking and active lifestyles.

#### PF04A - UNISEX POLAR FLEECE/MICRO FIBRE CONTRAST REVERSIBLE VEST

MODERN FIT	XS	S	M	L	XL	2XL	3XL
HALF CHEST	54.0	57.5	60.0	62.5	65.0	67.5	70.0
BODY LENGTH	64.0	66.0	68.0	70.0	72.0	74.0	76.0



WIND & COLD



REVERSIBLE



## PF27

### KENSINGTON NYLON/POLAR FLEECE REVERSIBLE VEST

#### FABRIC

Shell: 100% Nylon Taslon, inner: 100% Polyester Polar Fleece.

#### STYLE

Reversible and modern fit. Concealed zippered embroidery access. Front storage pockets on both sides. Garment size in left pocket.

#### PF27 - UNISEX NYLON/POLAR FLEECE REVERSIBLE VEST

MODERN FIT	2XS	XS	S	M	L	XL	2XL	3XL	5XL	7XL
LADIES REF	8	10	12	14	16	18	20	22	24/26	28/30
HALF CHEST	48	51	54	56.5	59	61.5	64	66.5	71.5	76.5
BODY LENGTH	62	65	68	70	72	74	76	78	79	80



BLACK/BLACK

NAVY/NAVY



WIND & COLD  
PROOF





## PF02

### FREEDOM ANTI-PILL POLAR FLEECE CONTRAST VEST

#### FABRIC

320gsm - Anti-pill Polar Fleece, 100% Polyester.

#### STYLE

Contrast piping around the armhole. Size-adjustable toggle and side pockets. Provides warmth while allowing freedom for arm movements.

#### PF02 - UNISEX ANTI-PILL POLAR FLEECE CONTRAST VEST

MODERN FIT	2XS	XS	S	M	L	XL	2XL	3XL	4XL	5XL
HALF CHEST	50.0	53.0	56.0	59.0	61.5	64.0	66.5	69.0	71.5	74.0
BODY LENGTH	60.0	63.0	66.0	69.0	72.0	74.0	76.0	78.0	80.0	82.0



BLACK/BLACK



BOTTLE/BOTTLE



NAVY/NAVY



CHERRY RED/LACK



ROYAL/BLACK



WIND & COLD  
PROOF



UV PROTECTION



EASY CARE



WIND & COLD  
PROOF



EASY CARE

## SCF02

### CABLE KNITTED ACRYLIC SCARF

#### FABRIC/ STYLE

166gsm - 100% Acrylic. Knitted with cable row feature

#### SIZE

1100 (L) x 180 (W) mm



BLACK



CHARCOAL



NAVY



STONE