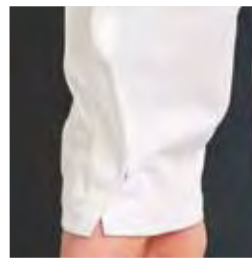


**FCW**  
FASHION  
CLUBWEAR



# WORK/SAFETY OVERALLS & COVERALLS





**WA09HV**  
**MENS BIOMOTION NIGHTWEAR COVERALL WITH X BACK TAPE**  
**CONFIGURATION**

**FABRIC**  
 280gsm - 100% Cotton Drill

**STYLE**  
 3M Scotchlite™ reflective tapes with X Back Biomotion configuration. Front left chest pocket with tool partition. Front right pocket with flap. Metal press consealed buttons. Elasticised at centre back waist. Excellent sun protection with UPF 50+. Conforms to AS/NZS 4602.1:2011 Class N. Night safety wear.

**COLOUR**  
 White

WA09HV - MENS BIOMOTION NIGHTWEAR COVERALL WITH X BACK TAPE CONFIGURATION												
EASY FIT	72R	77R	82R	87R	92R	97R	102R	107R	112R	117R	122R	127R
HALF CHEST	50	52.5	55	57.5	60	62.5	65	67.5	70	72.5	75	77.5
WAIST	42.5	45	47.5	50	52.5	55	57.5	60	62.5	65	67.5	70
INLEG LENGTH	76	78	80	82	83	83	83	83	83	83	83	83



**3M Scotchlite™**



## SW207

### MENS HI-VIS COTTON DRILL TWO-TONE SAFETY COVERALL WITH 3M SCOTCHLITE™ REFLECTIVE TAPES

#### FABRIC/STYLE

190gsm - 100% Cotton Drill.

- 3M Scotchlite™ reflective tapes • *Front left chest pocket with tool partition* • Front right pocket with flap • Metal press concealed buttons • *Elasticised at centre back waist*
- Excellent sun protection with UPF 50+ • Contrasting lower body • Conforms to AS/NZS 4602.1:2011 Class D/N
- Day and night safety wear.

#### SW207 - MENS REGULAR SIZE, HI-VIS COTTON DRILL COVERALL WITH 3M

EASY FIT	77R	82R	87R	92R	97R	102R	107R	112R
HALF CHEST	52.5	55	57.5	60	62.5	65	67.5	70
HALF WAIST	45	47.5	50	52.5	55	57.5	60	62.5
INLEG LENGTH	76	79	81	84	85	86	87	88



TOUGH WEARING



UV PROTECTION



AUS/NZ 4602.1:2011



100% COTTON FABRIC

**3M Scotchlite™**



FLUORO ORANGE/NAVY



FLUORO YELLOW/NAVY



## SW204/SW205

### MENS HI-VIS COTTON DRILL TWO-TONE SAFETY COVERALL

#### FABRIC/STYLE

310gsm - 100% Cotton Drill.

- *Made from pre-shrunk and mercerised fabric* • Organiser pockets • Excellent UV protection with UPF rating 50+ • All stress points bar-tacked • Contrasting lower body • *Elasticised waist* • Hard wearing • Conforms to AS/NZS 4602.1:2011 Class D • Day safety wear.

#### SW204 - MENS REGULAR SIZE, HI-VIS COTTON DRILL COVERALL

EASY FIT	77R	82R	87R	92R	97R	102R	107R	112R
HALF CHEST	52.5	55	57.5	60	62.5	65	67.5	70
HALF WAIST	45	47.5	50	52.5	55	57.5	60	62.5
INLEG LENGTH	76	79	81	84	85	86	87	88

#### SW205 - MENS STOUT SIZE, COTTON DRILL COVERALL

EASY FIT	87S	92S	97S	102S	107S	112S	117S	122S
HALF CHEST	57.5	60	62.5	65	67.5	70	72.5	75
HALF WAIST	48.5	51	53.5	56	58.5	61	63.5	66
INLEG LENGTH	71	74	76	79	81	82	83	84



FLUORO ORANGE/NAVY



FLUORO YELLOW/NAVY



TOUGH WEARING



UV PROTECTION



AUS/NZ 4602.1:2011



100% COTTON FABRIC



FLUORO ORANGE/NAVY

FLUORO YELLOW/NAVY



TOUGH WEARING

UV PROTECTION

AUS/NZ 4602.1:2011

COTTON FABRIC

## SW201/SW202

### MENS HI-VIS COTTON DRILL TWO-TONE SAFETY OVERALL

#### FABRIC

310gsm - 100% Cotton Drill.

#### STYLE

- Made from pre-shrunk and mercerised fabric •
- Organiser pockets on legs and chest • Excellent UV protection with UPF rating 50+ • All stress points bar-tacked • Contrasting lower body • *Elasticised waist*
- Hard wearing • Heavy duty nickel-plated studs •
- Conforms to AS/NZS 4602.1:2011 Class D • Day safety wear.

#### SW201 - MENS REGULAR SIZE, HI-VIS ACTION BACK OVERALL

EASY FIT	77R	82R	87R	92R	97R	102R	107R	112R
HALF CHEST	47.5	50	52.5	55	57.5	60	62.5	65
HALF WAIST	43.5	46	48.5	51	53.5	56	58.5	61
INLEG LENGTH	76	79	81	84	85	86	87	88

#### SW202 - MENS STOUT SIZE, HI-VIS ACTION BACK OVERALL

EASY FIT	87S	92S	97S	102S	107S	112S	117S	122S
HALF CHEST	52.5	55	57.5	60	62.5	65	67.5	70
HALF WAIST	48.5	51	53.5	56	58.5	61	63.5	66
INLEG LENGTH	71	74	76	79	81	82	83	84



KHAKI

NAVY



TOUGH WEARING

UV PROTECTION

COTTON FABRIC

## WA07/WA08

### MENS HEAVY COTTON DRILL COVERALL

#### FABRIC

310gsm - 100% Cotton Drill.

#### STYLE

- Made from pre-shrunk and mercerised fabric •
- Organiser pockets • Excellent UV protection with UPF rating 50+ • All stress points bar-tacked • Hard wearing.

#### WA07 - MENS REGULAR SIZE, COTTON DRILL COVERALL

EASY FIT	77R	82R	87R	92R	97R	102R	107R	112R
HALF CHEST	52.5	55	57.5	60	62.5	65	67.5	70
HALF WAIST	45	47.5	50	52.5	55	57.5	60	62.5
INLEG LENGTH	76	79	81	84	85	86	87	88

#### WA08 - MENS STOUT SIZE, COTTON DRILL COVERALL

EASY FIT	87S	92S	97S	102S	107S	112S	117S	122S
HALF CHEST	57.5	60	62.5	65	67.5	70	72.5	75
HALF WAIST	48.5	51	53.5	56	58.5	61	63.5	66
INLEG LENGTH	71	74	76	79	81	82	83	84



## WA01/WA02

### MENS HEAVY COTTON DRILL PRE-SHRUNK OVERALL

#### FABRIC/STYLE

310gsm - 100% Cotton Drill.

- Made from pre-shrunk and mercerised fabric
- Organiser pockets on legs and chest
- Excellent UV protection with UPF rating 50+
- All stress points bar-tacked
- **Elasticised waist**
- Hard wearing
- Heavy duty nickel-plated studs.



KHAKI NAVY BACK

#### WA01 - MENS REGULAR SIZE, ACTION BACK OVERALL

EASY FIT	77R	82R	87R	92R	97R	102R	107R	112R
HALF CHEST	47.5	50	52.5	55	57.5	60	62.5	65
HALF WAIST	43.5	46	48.5	51	53.5	56	58.5	61
INLEG LENGTH	76	79	81	84	85	86	87	88

#### WA02 - MENS STOUT SIZE, ACTION BACK OVERALL

EASY FIT	87S	92S	97S	102S	107S	112S	117S	122S
HALF CHEST	52.5	55	57.5	60	62.5	65	67.5	70
HALF WAIST	48.5	51	53.5	56	58.5	61	63.5	66
INLEG LENGTH	71	74	76	79	81	82	83	84



TOUGH WEARING UV PROTECTION COTTON FABRIC



## WA04

### MENS CORDURA® COTTON DUCK WEAVE CANVAS OVERALL

#### FABRIC

345gsm - CORDURA® duck weave canvas, 100% fine Cotton.

- Organiser pockets on legs and chest
- All stress points bar-tacked
- Reinforced with durable CORDURA® patches
- Knee pads provision (*knee pads - WNP01 sold separately*)
- Front closure with concealed stud buttons
- Excellent UV protection with UPF rating 50+



KHAKI NAVY BACK

#### WA04 - MENS REGULAR SIZE, HEAVY COTTON ACTION BACK OVERALL

EASY FIT	77R	82R	87R	92R	97R	102R	107R	112R
HALF CHEST	47.5	50	52.5	55	57.5	60	62.5	65
HALF WAIST	43.5	46	48.5	51	53.5	56	58.5	61
INLEG LENGTH	76	79	81	84	85	86	87	88



FABRIC TOUGH WEARING UV PROTECTION COTTON FABRIC